

**CERTIFICATE OF ANALYSIS**



Juniper Analytics, LLC  
 1334 NE 2nd Street, Bend, OR, 97701  
 541.382.3796  
 ORELAP: 4101 / OLCC: 010-10035537931

Client Name: ██████████  
 Contact Info: Phillip  
 Sample Type: Extract  
 External Batch ID: 7  
 Harvest/Prod. Date: 2020-01-20  
 Sample ID: Light Yellow Terps  
 METRC ID: Personal  
 Juniper Batch #: 20JA0161.07  
 Intake Date: 2020-01-21

**NOT FOR COMPLIANCE**

Sample not sampled per  
 OAR 333-064-0100

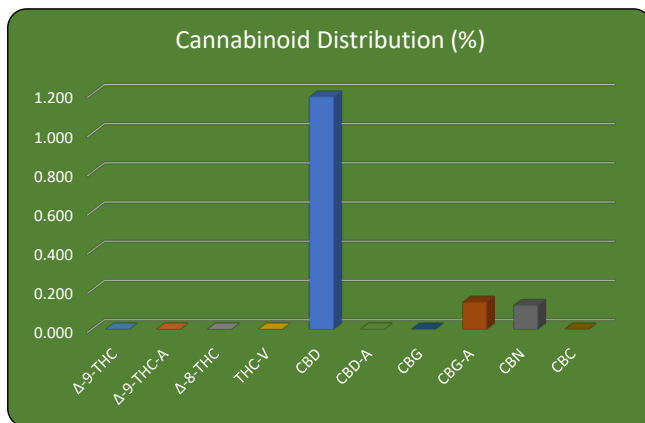


**Potency Analysis (Oregon Compliance Standard OAR 333-007-0430)**

ANALYSIS DATE: 2020-01-22

Compound	Weight (%)	Concentration (mg/g)	LOQ* (mg/g)
Δ-9-THC	< LOQ	< LOQ	1.00
Δ-9-THC-A	< LOQ	< LOQ	1.00
Δ-8-THC	< LOQ	< LOQ	1.00
THC-V	< LOQ	< LOQ	1.00
CBD	1.185	11.85	1.00
CBD-A	< LOQ	< LOQ	1.00
CBG	< LOQ	< LOQ	1.00
CBG-A	0.137	1.37	1.00
CBN	0.121	1.21	1.00
CBC	< LOQ	< LOQ	1.00

Instrument: HPLC/DAD  
 Method: JA-Potency-Proprietary



TOTAL THC/CBD	Weight (%)	Conc (mg/g)
THC Total =	<LOQ	<LOQ

THC<sub>Total</sub> = (THC-A \* 0.877) + Δ9THC

CBD Total =	1.185	11.85
-------------	-------	-------

CBD<sub>Total</sub> = (CBD-A \* 0.877) + CBD

\* < LOQ - Less than the Limit of Quantification

**Residual Solvent Analysis (Oregon Compliance Standard OAR 333-007-0410)**

ANALYSIS DATE: 2020-01-22

Solvent	Result (ppm)	Action Level / LOQ (ppm)
1,4-Dioxane	<LOQ	380 / 100
2-Butanol	<LOQ	5000 / 500
2-Ethoxyethanol	<LOQ	160 / 100
2-Propanol (IPA)	841	5000 / 500
Acetone	<LOQ	5000 / 500
Acetonitrile	<LOQ	410 / 100
Benzene	<LOQ	2 / 1
Cumene	<LOQ	70 / 50
Cyclohexane	<LOQ	3880 / 500
Dichloromethane	<LOQ	600 / 100
Ethyl acetate	598	5000 / 500
Ethyl ether	<LOQ	5000 / 500
Ethylene glycol	<LOQ	620 / 300
Ethylene oxide	<LOQ	50 / 10
Heptane	<LOQ	5000 / 500
Isopropyl acetate	<LOQ	5000 / 500
Methanol	<LOQ	3000 / 500
Propane	<LOQ	5000 / 500
Tetrahydrofuran	<LOQ	720 / 100
Toluene	<LOQ	890 / 100

Instrument: GC/MS Method: USP 467 - Modified

Solvent	Result (ppm)	Action Level / LOQ (ppm)
<b>Pentanes;</b>	<LOQ	5000 / 500
-n-pentane	<LOQ	**
-iso-pentane	<LOQ	**
-neo-pentane	<LOQ	**
<b>Butanes;</b>	<LOQ	5000 / 500
-n-butane	<LOQ	**
-iso-butane	<LOQ	**
<b>Hexanes;</b>	<LOQ	290 / 50
-n-hexane	<LOQ	**
-2-methylpentane	<LOQ	**
-3-methylpentane	<LOQ	**
-2,2-dimethylbutane	<LOQ	**
-2,3-dimethylbutane	<LOQ	**
<b>Xylenes;</b>	<LOQ	2170 / 300
-1,2-dimethylbenzene	<LOQ	**
-1,3-dimethylbenzene	<LOQ	**
-1,4-dimethylbenzene	<LOQ	**
-Ethyl benzene	<LOQ	**

\*\*Limit based on combined results

Residual Solvents **PASS**

Tentatively Identified Compounds: Peak 1: Hits 1-3: Ethanol; Peak 2: Hits 1-4: Acetic acid; Peak 3: Hits 1-2: 1-Hexanol

<LOQ - Less than the Limit of Quantification

<b>APPROVAL</b>	Report Date: 2020-01-24
 QA Review	



Juniper Batch #:	20JA0161.07
Intake Date:	2020-01-21

### Pesticide Analysis (Oregon Compliance Standard OAR 333-007-0400)

ANALYSIS DATE: 2020-01-23			Instrument: LC/MS/MS		Method: AOAC 2007.1-Mod	
Pesticide	Result (ppm)	Action Level / LOQ (ppm)	Pesticide	Result (ppm)	Action Level / LOQ (ppm)	
Abamectin	<LOQ	0.5 / 0.25	Imazalil	<LOQ	0.2 / 0.10	
Acephate	<LOQ	0.4 / 0.20	Imidacloprid	<LOQ	0.4 / 0.20	
Acequinocyl	<LOQ	2.0 / 1.00	Kresoxim-methyl	<LOQ	0.4 / 0.20	
Acetamiprid	<LOQ	0.2 / 0.10	Malathion	<LOQ	0.2 / 0.10	
Aldicarb	<LOQ	0.4 / 0.20	Metalaxyl	<LOQ	0.2 / 0.10	
Azoxystrobin	<LOQ	0.2 / 0.10	Methiocarb	<LOQ	0.2 / 0.10	
Bifenazate	<LOQ	0.2 / 0.10	Methomyl	<LOQ	0.4 / 0.20	
Bifenthrin	<LOQ	0.2 / 0.10	Methyl Parathion	<LOQ	0.2 / 0.10	
Boscalid	<LOQ	0.4 / 0.20	MGK-264	<LOQ	0.2 / 0.10	
Carbaryl	<LOQ	0.2 / 0.10	Myclobutanil	<LOQ	0.2 / 0.10	
Carbofuran	<LOQ	0.2 / 0.10	Naled	<LOQ	0.5 / 0.25	
Chlorantraniliprole	<LOQ	0.2 / 0.10	Oxamyl	<LOQ	1.0 / 0.50	
Chlorfenapyr	<LOQ	1.0 / 0.50	Paclobutrazol	<LOQ	0.4 / 0.20	
Chlorpyrifos	<LOQ	0.2 / 0.10	Permethrins	<LOQ	0.2 / 0.10	
Clofentezine	<LOQ	0.2 / 0.10	Phosmet	<LOQ	0.2 / 0.10	
Cyfluthrin	<LOQ	1.0 / 0.50	Piperonyl butoxide	<LOQ	2.0 / 1.00	
Cypermethrin	<LOQ	1.0 / 0.50	Prallethrin	<LOQ	0.2 / 0.10	
Daminozide	<LOQ	1.0 / 0.50	Propiconazole	<LOQ	0.4 / 0.20	
DDVP (Dichlorvos)	<LOQ	1.0 / 0.50	Propoxur	<LOQ	0.2 / 0.10	
Diazinon	<LOQ	0.2 / 0.10	Pyrethrins	<LOQ	1.0 / 0.50	
Dimethoate	<LOQ	0.2 / 0.10	Pyridaben	<LOQ	0.2 / 0.10	
Ethoprophos	<LOQ	0.2 / 0.10	Spinosad	<LOQ	0.2 / 0.10	
Etofenprox	<LOQ	0.4 / 0.20	Spiromesifen	<LOQ	0.2 / 0.10	
Etoxazole	<LOQ	0.2 / 0.10	Spirotetramat	<LOQ	0.2 / 0.10	
Fenoxycarb	<LOQ	0.2 / 0.10	Spiroxamine	<LOQ	0.4 / 0.20	
Fenpyroximate	<LOQ	0.4 / 0.20	Tebuconazole	<LOQ	0.4 / 0.20	
Fipronil	<LOQ	0.4 / 0.20	Thiacloprid	<LOQ	0.2 / 0.10	
Fonicamid	<LOQ	1.0 / 0.50	Thiamethoxam	<LOQ	0.2 / 0.10	
Fludioxonil	<LOQ	0.4 / 0.20	Trifloxystrobin	<LOQ	0.2 / 0.10	
Hexythiazox	<LOQ	1.0 / 0.50				
<b>Pesticide Screen</b>	<b>PASS</b>					

\*LOQ = Limit of Quantification

### Microbiological Contaminants (Oregon Compliance Standard OAR 333-007-0390)

ANALYSIS DATE: Not Tested			
Microbiological screening	Colony count	CFU/g	Results:
Total coliforms	Not tested	Not tested	N/A
Escherichia coli (E. coli)	Not tested	Not tested	N/A

### Terpene Profile

ANALYSIS DATE: 1/22/2020 &amp; 1/23/2020

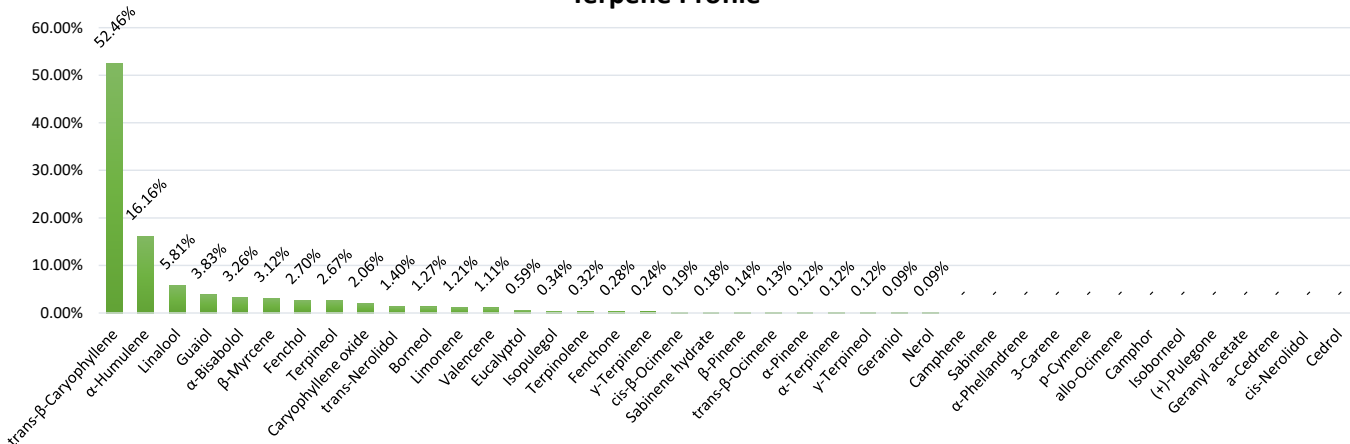
Instrument: GC/MS

Method: JA-Terpene-Proprietary

Compound	µg/g	%
α-Pinene	558.08	0.056
Camphene	<LOQ	<LOQ
Sabinene	<LOQ	<LOQ
β-Myrcene	14094.77	1.409
β-Pinene	635.68	0.064
α-Phellandrene	<LOQ	<LOQ
3-Carene	<LOQ	<LOQ
α-Terpinene	555.73	0.056
trans-β-Ocimene	594.92	0.059
Limonene	5445.24	0.545
p-Cymene	<LOQ	<LOQ
cis-β-Ocimene	872.40	0.087
Eucalyptol	2670.50	0.267
γ-Terpinene	1078.55	0.108
Terpinolene	1459.48	0.146
Sabinene hydrate	803.42	0.080
Linalool	26225.26	2.623
allo-Ocimene	<LOQ	<LOQ
Fenchone	1272.93	0.127
Fenchol	12218.29	1.222

Compound	µg/g	%
Isopulegol	1538.65	0.15
Camphor	<LOQ	<LOQ
Isoborneol	<LOQ	<LOQ
Borneol	5738.39	0.57
Terpineol	12049.76	1.20
γ-Terpineneol	536.92	0.05
Nerol	392.70	0.04
Geraniol	403.67	0.04
(+)-Pulegone	<LOQ	<LOQ
Geranyl acetate	<LOQ	<LOQ
α-Cedrene	<LOQ	<LOQ
trans-β-Caryophyllene	236940.93	23.69
α-Humulene	72978.16	7.30
Valencene	5000.81	0.50
cis-Nerolidol	<LOQ	<LOQ
trans-Nerolidol	6305.10	0.63
Guaiol	17289.64	1.73
Caryophyllene oxide	9297.75	0.93
Cedrol	<LOQ	<LOQ
α-Bisabolol	14743.78	1.47
TOTAL	451701.54	45.170

### Terpene Profile\*



\* Profile expressed as a percent of total terpenes

Batch QC WorkGroup ID:

Potency PO-2020-01-21-02

Residual Solvents RS-2020-01-21-01

Pesticide Pest-2020-01-21-02

### Disclaimer

The results within this report apply only to the product tested and batched under the batch number identified above. These test results are for the exclusive use of the above named individual or entity. This report must not be altered, and may not be reproduced, except in their entirety, without written consent of Juniper Analytics, LLC. Requests for information regarding these results should be referred to the aforementioned individual or entity.